

# Options and Accessories

## Refrigerant condensers

### Options and Accessories

Below is a listing of the main Vertex<sup>®</sup> options and accessories. If your required option or accessory is not listed, look no further than your [local BAC representative](#).



#### Remote sump connection

The best way to **prevent a sump freezing** is to use the auxiliary remote variety within a heated area. Shutting off the circulating pump allows all the water in the water distribution, as well as that in suspension and the sump to drain freely to the auxiliary sump.



#### Basin heater package

Thanks to our factory-installed heaters, the water stays at 4°C and **never freezes**, even during equipments downtime and however cold it gets outside.



## Vibration cut out switch

When excessive vibration occurs, this switch shuts down the fan, ensuring your cooling equipment **operates safely**.



## Electric water level control package

For perfectly precise water level control, replace the standard mechanical valve with our electrical water level controller.



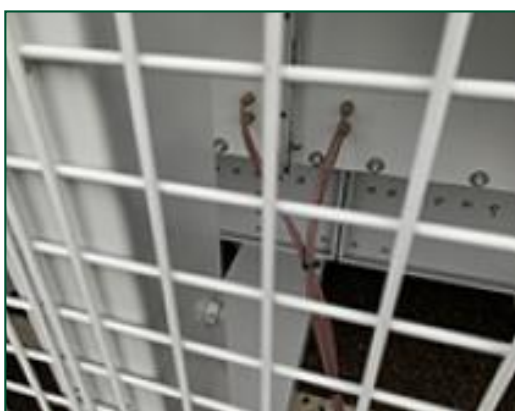
## Platforms

To inspect and maintain from the top of the unit more **easily** and **safely**, platforms can be installed.



### Ladder, safety cage and handrail

A ladder, safety cage and handrails **all facilitate access to the top of the unit** and safe inspection of your condenser.



### Extended lubrication lines

Extended lubrication lines with easily accessible grease fittings can be used **to lubricate** fan shaft bearings.



### Internal walkway

An internal walkway for **easy access to the unit water basin**.



## Safety switch

Cuts power to motors **with safety in mind** during inspection or maintenance.



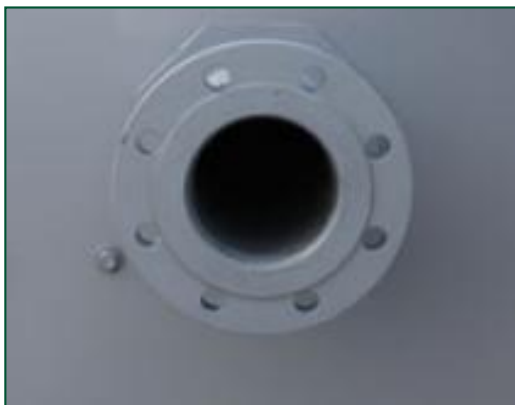
## Solid bottom panels

Solid bottom panels are required when the unit is installed elevated by 30 cm or more and when intake air is ducted to the unit.



## Standby pump

Install a standby **reserve spray pump** as failure backup!



## Flanges

Flanges facilitate **piping connections** on-site.



## Water treatment equipment

Devices to control water treatment are needed to ensure proper **condenser water care**. Not only does this help protect the components, controlling corrosion, scaling and fouling, it also avoids the proliferation of harmful bacteria, including **legionella**, in the recirculating water.



## Filter

Separators and media filters efficiently **remove suspended solids** in the recirculating water, reducing system cleaning costs and optimizing water treatment results. Filtration helps you keep the recirculating water clean.



## Sump sweeper piping

Sump sweeper piping **prevents sediment collecting in the cold water basin** of the unit. A complete piping system, including nozzles, is installed in the basin of the condenser **for connection to side stream filtration** equipment.



## Clean out port

Clean out port **makes it easy to eliminate silt and sludge** from the condenser basin when cleaning and flushing the sump.